

ANNEX II

Ethiopia

LIBRARY OF NONSTANDARD UNIT CONVERSION FACTORS
AND REFERENCE PHOTOS

DOCUMENTATION

The Ethiopia nonstandard unit library was prepared in conjunction with the third wave of the Ethiopia Socioeconomic Survey (ESS3). All relevant materials were collected during a market survey conducted in May 2015. The components of the library were then utilized during data collection for the ESS3 which commenced in August 2015. The library consists of the following components:

- **Tables of valid item-unit and crop-unit combinations.** The lists are not exhaustive and are meant as a general guide. The items/crops are grouped according to common allowable units. The two tables list the items/crops on the left and the units across the top. The “X” indicates that the unit is valid for the respective item/crop.
- **Conversion factor tables** that list all available kilogram conversions for nonstandard units. Separate tables are provided for household consumption items and agricultural production. Note that some conversion factors are present in both tables. Each table contains all conversion factors collected during the market survey but does not list all item/crop-unit combinations. Any combinations where conversion factors were not collected have been omitted from the table. Conversion factors are provided for all of Ethiopia as well as for 7 regions (Tigray, Afar, Amhara, Oromiya, Benishangul Gumuz, SNNP, and Gambella) and one region grouping (Somalie, Dire Dawa, and Harar). Where possible, a region specific conversion factor is listed. However, if no conversion factor was collected in a particular region, the national average has been listed in the Region columns for the sake of completeness. The corresponding item, crop, and unit codes have been provided for use with the ESS. However, the unit codes will only correspond to wave 3 of the ESS. Separate conversion factors (based on those provided in this library) are available for ESS1 and ESS2. The conversion factor tables are provided in excel format in the files accompanying this document. The conversion factor tables in Stata format are included with the ESS3 data, available for download [here](#).
- **A set of reference photos** for use in data collection. Item specific photos are provided for “noncontainer” units: piece, medeb, etc. For containers, a single photo is provided for each container but not for each item. The conversion factors for the noncontainers listed in the conversion factor tables directly correspond to the pictured quantity.

These three components are primarily intended for use with the ESS3 data. However, they are also intended as a resource for other surveys conducted in Ethiopia that allow respondents to report quantities in nonstandard units. The formatting of the items and units (especially in the conversion factor tables) is specific to the ESS, but can be adapted to suit other surveys or data.

ALLOWABLE ITEM-UNIT COMBINATIONS

Table A1: Ethiopia consumption item-unit combinations

		BIRCHIKO (small, medium, large)														
		BUNCH (small, medium, large)														
		ESIR (small, medium, large)														
		FESTAL (small, medium, large)														
		JOG														
		KERCHAT/KEMBA (small, medium, large)														
		KUBAYA/CUP (small, medium, large)														
		KUNNA (small, medium, large)														
		MEDEB (small, medium, large)														
		MELEKIYA														
		PIECES (small, medium, large)														
		SAHIN (small, medium, large)														
		SINI (small, medium, large)														
		TASA/TANIKA/SHEMBER/SELEMON (s,m,l)														
		ZOREBA (small, medium, large)														
CEREALS																
1	TEFF	X				X	X	X	X				X		X	
2	WHEAT	X				X	X	X	X				X		X	
3	BARLEY	X				X	X	X	X				X		X	
4	MAIZE	X				X	X	X	X			X	X		X	
5	SORGHUM	X				X	X	X	X				X		X	
6	MILLET	X				X	X	X	X				X		X	
PULSES & NUTS																
7	HORSE BEANS	X				X	X	X	X				X	X	X	
8	CHICKPEAS	X				X	X	X	X				X	X	X	
9	FIELD PEAS	X				X	X	X	X				X	X	X	
10	LENTILS	X				X	X	X	X				X	X	X	
11	HARICOT BEANS	X				X	X	X	X				X	X	X	
110	GROUND NUTS	X				X	X	X	X				X	X	X	
SEEDS																
12	NUEG	X				X	X	X	X		X		X	X	X	
13	LINESEED	X				X	X	X	X		X		X	X	X	
130	SESAME	X				X	X	X	X		X		X	X	X	
VEGETABLES																
14	ONION			X			X			X		X	X		X	
141	GREEN PEPPER				X	X	X	X	X	X		X	X		X	
142	RED PEPPER				X		X	X	X	X			X		X	
143	GREENS (KALE, CABBAGE, ETC.)		X		X		X		X	X		X	X			
144	TOMATOES				X		X		X	X		X	X			
FRUITS																
15	BANANAS		X									X				
151	ORANGE				X		X		X	X		X	X			

TUBERS & STEMS															
16	POTATOES					X	X		X	X		X	X		X
17	KOCHO				X		X			X					
26	BULA									X					
170	SWEET POTATO						X			X		X	X		
171	BOYE/YAM						X		X	X		X	X		
172	CASSAVA						X			X		X	X		
173	GODERE						X			X		X	X		
OTHERS															
19	MILK	X				X		X							X
20	CHEESE			X								X	X		
21	EGGS														
22	SUGAR	X						X						X	X
23	SALT	X						X			X			X	X
STIMULANTS															
24	COFFEE	X				X		X			X			X	X
25	CHAT			X	X							X			X

Table A2: Ethiopia agricultural production crop-unit combinations

		AKUMADA/DAWLA/LEKOTA (small, medium, large) BOX/CASA BUNCH (small, medium, large) CHINET (small, medium, large) ESIR (small, medium, large) FESTAL (small, medium, large) JOG JONIYA/KASHA (small, medium, large) KERCHAT/KEMBA (small, medium, large) KUBAYA/CUP (small, medium, large) KUNNA (small, medium, large) MADABERIA (small, medium, large) MEDEB (small, medium, large) PIECES (small, medium, large) SAHIN (small, medium, large) SHEKIM (small, medium, large) TASA/TANIKA (small, medium, large) ZOREBA/AKARA (small, medium, large)																
1	BARLEY	X			X			X	X	X	X	X	X			X	X	X
2	MAIZE	X			X			X	X	X	X	X	X		X	X	X	X
3	MILLET	X			X			X	X	X	X	X	X			X	X	X
4	OATS	X			X			X	X	X	X	X	X			X	X	X
6	SORGHUM	X			X			X	X	X	X	X	X			X	X	X
7	TEFF	X			X			X	X	X	X	X	X			X	X	X
8	WHEAT	X			X			X	X	X	X	X	X			X	X	X
10	CASSAVA	X							X	X			X	X	X	X		
11	CHICKPEAS	X						X	X	X	X	X	X			X		X
12	HARICOT BEANS	X						X	X	X	X	X	X			X		X
13	HORSE BEANS	X						X	X	X	X	X	X			X		X
14	LENTILS	X						X	X	X	X	X	X			X		X
15	FIELD PEAS	X						X	X	X	X	X	X			X		X
16	VETCH	X						X	X	X	X	X	X			X		X
19	CACTUS	X							X	X		X	X		X			
23	LINESEED	X						X	X	X	X	X	X			X		X
24	GROUND NUTS	X						X	X	X	X	X	X			X		X
25	NUEG	X						X	X	X	X	X	X			X		X
26	RAPESEED	X						X	X	X	X	X	X			X		X
27	SESAME	X						X	X	X	X	X	X			X		X
28	SUNFLOWER	X						X	X	X	X	X	X			X		X
36	FENUGREEK	X						X	X	X	X	X	X			X		X
37	GINGER	X					X		X	X	X	X	X	X		X		X
38	RED PEPPER	X					X		X	X	X	X	X	X		X		X
42	BANANAS		X	X											X			
44	LEMONS	X	X				X		X	X		X	X	X	X	X		
46	MANGOS	X	X				X		X	X		X	X	X	X	X		
47	ORANGES	X	X				X		X	X		X	X	X	X	X		
48	PAPAYA	X	X				X		X	X		X	X	X	X	X		

		AKUMADA/DAWLA/LEKOTA (small, medium, large) BOX/CASA BUNCH (small, medium, large) CHINET (small, medium, large) ESIR (small, medium, large) FESTAL (small, medium, large) JOG JONIYA/KASHA (small, medium, large) KERCHAT/KEMBA (small, medium, large) KUBAYA/CUP (small, medium, large) KUNNA (small, medium, large) MADABERIA (small, medium, large) MEDEB (small, medium, large) PIECES (small, medium, large) SAHIN (small, medium, large) SHEKIM (small, medium, large) TASA/TANIKA/SHEMBER/SELEMON (s,m,l) ZOREBA/AKARA (small, medium, large)																
51	BEET ROOT	X	X				X		X	X		X	X	X	X	X		
52	CABBAGE	X							X				X		X			
53	CARROT	X				X			X	X		X	X	X	X	X		
55	GARLIC	X				X			X	X	X	X	X	X	X		X	
56	KALE	X				X			X	X			X				X	
58	ONION	X				X			X	X			X	X	X	X		X
59	GREEN PEPPER	X	X				X	X	X	X	X	X	X	X	X	X		X
60	POTATOES	X	X					X	X	X		X	X	X	X	X		X
61	PUMPKINS	X							X				X		X			
62	SWEET POTATO	X							X	X			X	X	X	X		
63	TOMATOES	X	X				X		X	X		X	X	X	X	X		
64	GODERE	X							X	X			X	X	X	X		
65	GUAVA	X	X				X		X	X		X	X	X	X	X		
69	SPINACH	X				X			X	X			X				X	
71	CHAT	X				X	X		X				X		X			X
72	COFFEE	X						X	X		X		X					X
75	GESHO	X					X		X	X		X	X	X		X		X
76	SUGAR CANE													X	X		X	
79	CORIANDER	X							X		X	X	X			X		X
84	AVOCADOS	X	X				X	X	X	X		X	X	X	X	X		X

REFERENCE PHOTOGRAPHS

Table of Contents

Item	Page #	Unit (container)	Page #
Banana	2, 3	Akumada	8
Cabbage	2	Birchiko	6
Chat	5	Box/casa	8
Cheese	5	Festal	6
Greens (kale, spinach, etc.)	2	Jog	5
Green pepper	1	Kerchat/kemba	6
Kocho	4	Kubaya/cup	6
Maize	1	Kunna	7
Onions	1	Madaberia	8
Orange	3	Melekiya	5
Potato	4	Sahin	7
Red pepper	1	Sini	7
Tomato	2	Tasa	7
Tubers	4		

በቆሎ፣ ቁጥር

(Maize: Pieces)

Small (141), Medium (142), Large (143)



ቃርያ፣ መደብ

(Green Chili Pepper: Medeb)

Small (131), Medium (132), Large (133)



ቀይ ሸንኩርት፣ መደብ

(Onions: Medeb)

Small (131), Medium (132), Large (133)



በርበሬ፣ መደብ

(Red Pepper: Medeb)

Small (131), Medium (132), Large (133)



ጎመን፣ ቁጥር

(Greens - Cabbage: Pieces)

Small (141), Medium (142), Large (143)



ጎመን/ቆስጣ/ሰላጣ፣ አስር

(Greens - Kale: Esir)

Small (61), Medium (62), Large (63)



ቲማቲም፣ መደብ

(Tomatoes: Medeb)

Small (131), Medium (132), Large (133)



ሙዝ፣ ቁጥር

(Banana: Pieces)

Small (141), Medium (142), Large (143)



ሙዝ፣ ዘለላ

(Banana: Bunch)

Small (41), Medium (42), Large (43)



ብርቱካን፣ ቁጥር

(Orange: Piece)

Small (141), Medium (142), Large (143)



ብርቱካን፣ ሙደብ

(Orange: Medeb)

Small (131), Medium (132), Large (133)



ድንች፣ ቁጥር

(Potato: Piece)

Small (141), Medium (142), Large (143)



ድንች፣ መደብ

(Potato: Medeb)

Small (131), Medium (132), Large (133)



ቆጫ፣ መደብ

(Kocho: Medeb)

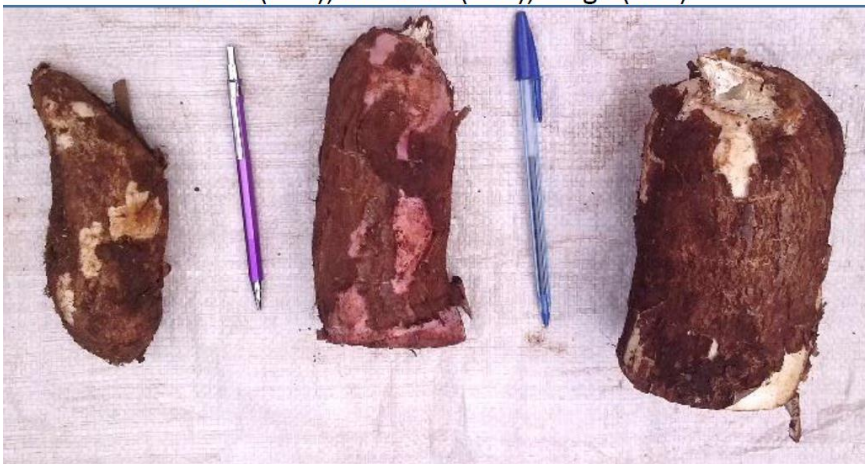
Small (131), Medium (132), Large (133)



ስራስር፣ ቁጥር

(Tubers: Pieces)

Small (141), Medium (142), Large (143)



ስራስር፣ መደብ

(Tubers: Medeb)

Small (131), Medium (132), Large (133)



ቡላ፣ አስረ

(Cheese: Esir)

Small (61), Medium (62), Large (63)



ጆግ

(Jog)

One size(8)



መለኪያ

(Melekiya)

One size (9)

ጫት፣ ዘረባ /አቃራ

(Chat: Zorba/Akara)

Small (191), Medium (192), Large (193)



ብርክቆ

(Birchiko)

Small (31), Medium (32), Large (33)



ፌስታል

(Festal)

Small (71), Medium (72), Large (73)



ኩባያ

(Kubaya/Cup)

Small (101), Medium (102), Large (103)



ቅርጫት/ቀምባ

(Kerchat/Kemba)

Small (91, not shown), Medium (92), Large (93)



ቂና/ምሽ /ቀፈር/አንቅብ

(Kunna/Mishe/Kefer/Enkib)

Small (111), Medium (112), Large (113)



ሳህን

(Sahin)

Small (151), Medium (152), Large (153)



ጥሳ/ታኒካ/ሸምበር/ሰለሞን

(Tasa/Tanika/Shember/Selemon)

Small (181), Medium (182), Large (183)



ስኒ

(Sini)

Small (171), Large (172)



**Agricultural harvest units for
use with Post Harvest
questionnaire**

ሰጥን /ካሰ
(Box/Casa)
One size (6)



ማዳበሪያ/ኑሴ/ሻራ/ሻራ
(Madaberia/Nuse/Shera/Cheret)
Small (121), Medium (122), Large (123)



አቁማዳ /ዳዉላ /ለከታ
(Akumada/Dawla/Lekota)
Small (21), Large (22)

